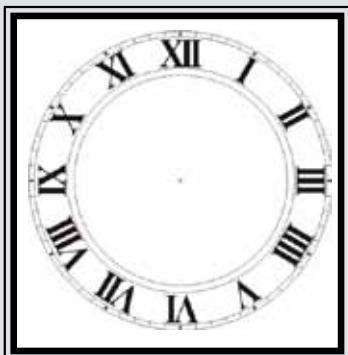


COLLAGE DE-CODER

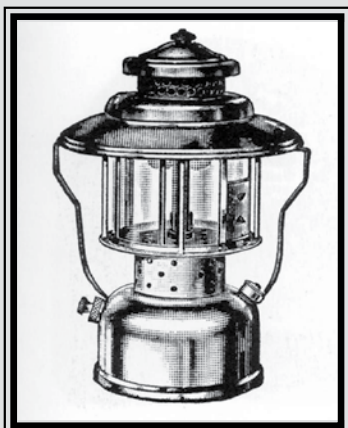
Common Collage Elements and Their Meaning



Sun-- To me, this image of the sun means much more than just light and warmth, although those characteristics to play into my use of this image. This humanized version of the sun reflects my belief in The Son and His constant, permeating presence in my life, hence the reason it so often comes up in my paintings. This image also symbolizes hope and my constant yearning for the positive and the good in thi life. The sun gives us light and warmth and reassurance that another day is upon us and is a gift to be enjoyed.



Clock Face--one of our most precious commodities is time. The element of time is interwoven in every story and plays a big part in how I view the world around me and my own journey. Time is fleeting and precious. It brings change, it creates perseverance and patience. It reveals our true character. Time is one thing that we all have in common and can all relate to. I also use this symbol to subtly encourage a viewer to remember this common thread in humanity and consider how he/she is using this common gift.



Camping Lantern-- The good old camping lantern harkens back to my childhood and many camping trips with my family but my understanding of this man-made tool didn't deepen for many years. I use this image to speak to the idea of every human being a vessel to be filled. We are empty and require "fuel." The light that is reflected is directly connected to the fuel that fills us. We might be made of flesh and blood, but we are also deeply spiritual and I believe that is why we yearn for more, we seek more, we want to be part of a bigger purpose and story.



Man with binoculars-- This particular image speaks to my own desire to explore, learn, and truly see. I am always searching out meaning and beauty in the world and people around me. I am on the lookout for how things connect and what makes someone who they are. The search is constant and ongoing.